

abbotFox

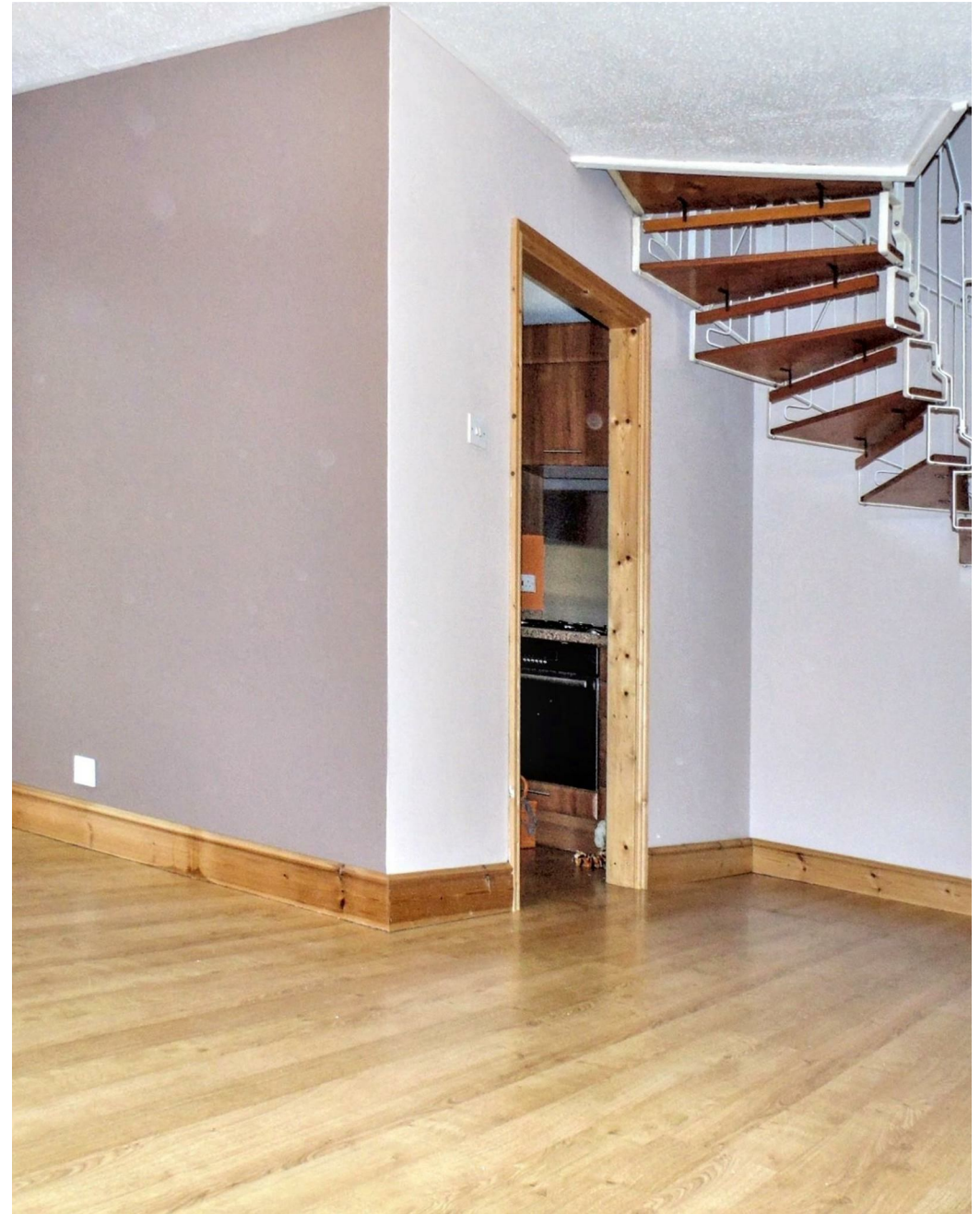


Mill Croft Close, New Costessey, Norwich
Guide £170,000

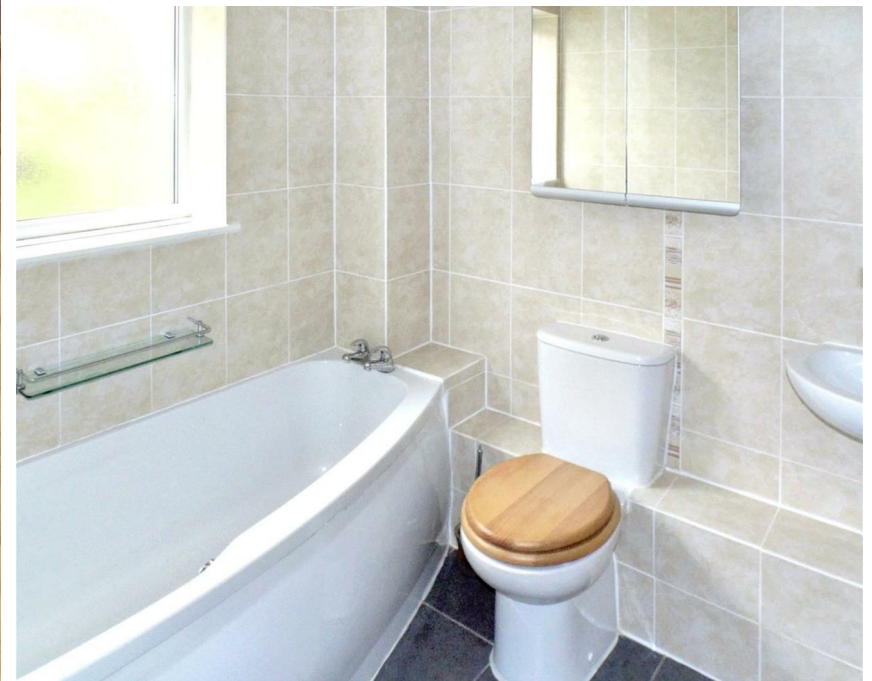
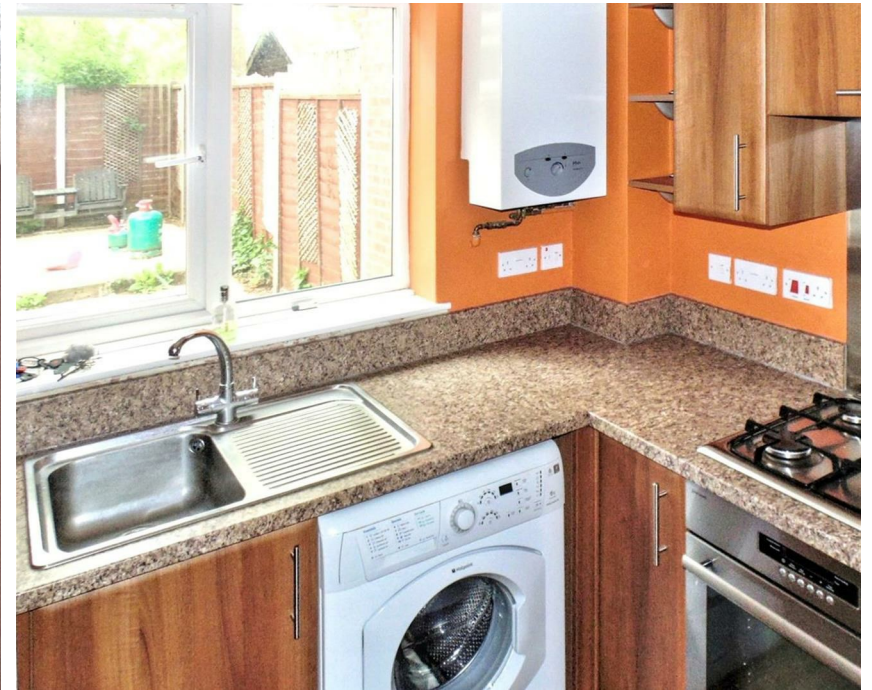
“

We are a team of genuine individuals who hold a deep passion for both property and marketing. Collectively, we bring over 70 years of experience in the property market of Norfolk and Suffolk. Our affection for both counties runs deep, and we are enthusiastic about sharing our passion with you.

Colin McKenzie | **Branch Partner**







THE DETAIL _____

abbotFox presents this ideal one-bedroom starter home, perfectly positioned in a quiet cul-de-sac within the ever-popular suburb of Costessey.

An excellent first-time purchase or investment opportunity, this home offers a bright and well-proportioned living space, with a generous lounge leading through to a conservatory and a fitted kitchen that enjoys views over the rear garden.

Upstairs, the double bedroom provides ample space, complemented by a bathroom and useful storage. Light-filled and low maintenance throughout, this is a home ready to move into and enjoy.

Outside, the property benefits from an enclosed rear garden, ideal for relaxing or entertaining, along with off-road parking to the front.

Situated within easy reach of Longwater Retail Park, local schools, and transport links to Norwich and beyond, this home offers a high degree of convenience, with an internal viewing highly recommended.





THE HIGHLIGHTS _____

- One bedroom starter home
- Comfortable living accommodation
- Private garden
- Off road parking
- Convenient location
- Ideal first home or investment opportunity
- Internal viewing recommended

Let's talk

01603 660000

sales@abbotfox.co.uk

[@abbotfox](#)

EPC RATING -

Disclaimer – In accordance with the Property Misdescriptions Act, the company abbotFox gives notice that all descriptions, references to condition, necessary permissions for use and other details are given in good faith and believed to be correct, but any purchaser should not rely on them as statements of fact, and must satisfy themselves by inspection or other means, as to their accuracy.